

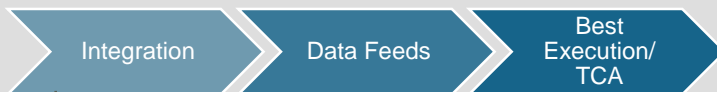
Execution Services

Multrees' Execution Services offers comprehensive market coverage via multi-provider solutions and fulfils best execution and transaction cost analysis reporting requirements. Aligning to your business with a 'best in class' approach, we manage the component parts to adapt to your requirements.

Service Summary

- Multrees provides access to and manages a network of specialist execution partners
- Centralised order routing for all Equities, ETFs, Fixed Income and Derivative products
- International markets execution coverage – includes UK, Americas, Europe & Asian Markets
- Straight through execution of trades and settlements in the market
- Compliance oversight for best execution, TCA, RTS28 and oversight reporting
- Online dashboard for best execution and transaction cost analysis reporting
- Specialist team available for query handling and trade support

Ensuring High Quality and Efficient Reporting



1: Integration

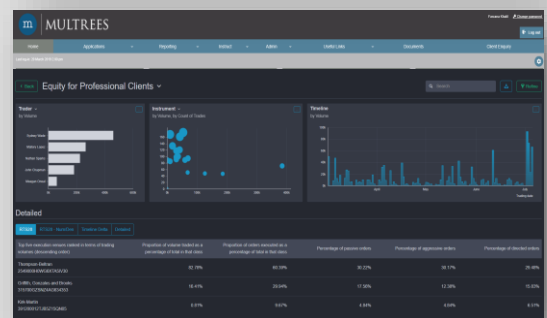
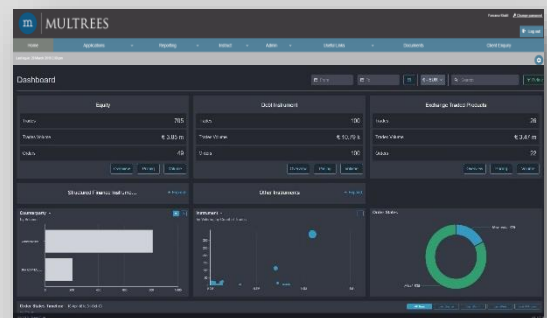
Efficient data ingestion and standard transformation conforming to regulatory required schemas and formats

2: Data Feeds

Client reference data enriched with instrument data. Universe includes ICE, Morningstar, LSE's SEDOL, FIRDS, AnaDSB

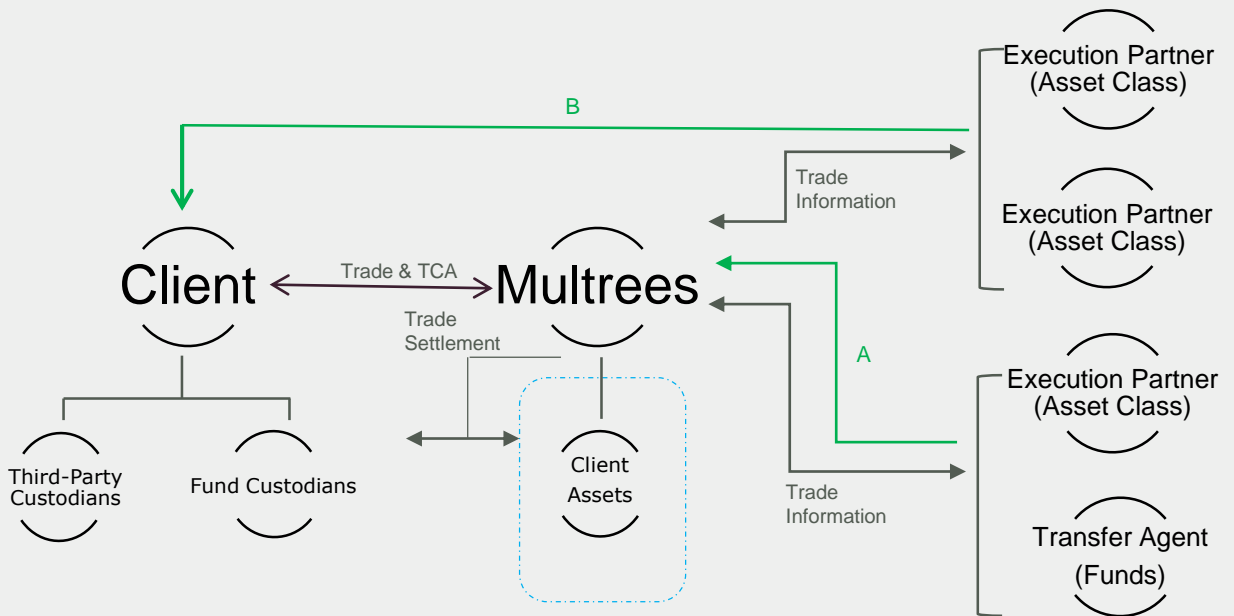
3: Best Execution / TCA

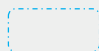
Modelling orders is driven by MiFID II and ESMA regulations. Volume calculations by instrument type with benchmarks & metrics covering:
1. Pre-Trade, 2. Intraday and 3. Post-Trade







Execution Services

Execution Services Schematic



 Assets in custody

 **A**
 Execution provider relationship with Multrees

 **B**
 Execution provider relationship direct with Client routed by Multrees